



MET Professional Academy

HIGH SCHOOL REDEFINED

Be part of an innovative program where you *fast-forward* into your future.

Tap into your passion and find a way to be the change. At the MET, students are free to work collaboratively as they are fully immersed in a professional culture, solving real-world problems, using industry-standard tools, and working alongside industry experts as mentors.

MEDICAL STRAND



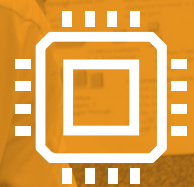
Explore a variety of healthcare fields through college level coursework, shadowing opportunities, projects and internships.

ENGINEERING STRAND



Combine engineering, entrepreneurship and innovation. Learn through hands-on, active learning opportunities in projects sponsored by business partners.

TECHNOLOGY STRAND



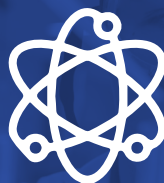
Immerse yourself in a professional environment where technology is utilized to design products and solve problems.

GLOBAL BUSINESS STRAND



Students will work on projects with business partners in the community to develop their professional, project management and strategic skills.

BIOSCIENCE STRAND



Experience the intersection of biology and technology through scientific inquiry and project-based learning.



capsnetwork
collaborate · innovate · educate

PEORIA
UNIFIED SCHOOL DISTRICT

All MET course offerings are two class periods each day so that students can become immersed in collaborative work with peers and business partners.

COURSE NAME **PEORIA UNIFIED CREDITS**

MET Medical Foundations I/II Honors (3.0 minimum GPA. Students qualify for the STEM tuition waiver if they have a 3.25 GPA or higher.)	4 honors credits 8 possible dual enrollment credits through Grand Canyon University* MET Medical Foundations II students can earn advanced biology lab credit
MET Medical Applications I/II Honors (3.25 minimum GPA)	4 honors credits 8 dual enrollment credits through Grand Canyon University*
MET Engineering I/II Honors Design Thinking	4 honors credits MET Engineering II students can earn physics lab credit
MET Engineering III/IV Honors Innovative Design	4 honors credits FSE 100 Introduction to Engineering through ASU
MET Cybersecurity & IT Networking Honors Cisco, Ethics, Linux & Windows	4 honors credits 13 dual enrollment credits through Estrella Mountain Community College
MET Cybersecurity Capstone Honors	4 honors credits
MET Bioscience & Innovations Honors (3.0 minimum GPA)	2 honors credits MET Bioscience students can earn advanced biology lab credit
MET Bioscience Research Honors (3.0 minimum GPA)	2 honors credits
MET Global Business I/II H	4 honors credits

*Students will receive the GCU STEM tuition waiver with a minimum 3.25 GPA for MET medical courses

**All MET courses are honors courses and are all year-long